



Basic Supine Head Baseplate

YC-KIII-103

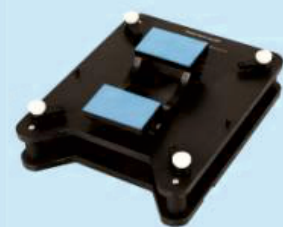
Carbon fiber material;
Compatible with 3-point head mask.



Basic Supine Head Baseplate

YC-KIII-104

Carbon fiber material;
Compatible with u-shaped head mask.



Prone Head Holder

YC-KIII-149

1. Carbon fiber material;
2. Compatible with u-shaped head mask;
3. The angles of head position are from 0° to 35°;
4. The prone head holder features sponge chin and forehead pads.



Lateral Baseplate

YC-KIII-150

1. Carbon fiber material;
2. Height adjustment range 20mm;
3. The lateral baseplate is specially padded for comfortable, reproducible lateral head & neck positioning;
4. Lateral baseplate includes lateral head cushion and reloadable frame.



Tilting Supine Head Baseplate

YC-KIII-106

1. Carbon fiber material;
2. Compatible with u-shaped head mask;
3. Tilting baseplate adjusts for angles from 0° to 45°.



Head-Shoulders Baseplate

YC-KIII-116

1. Carbon fiber material;
2. Equipped with a transparent head support.



Head-Shoulders Baseplate (Extension)

YC-KIII-118

1. Carbon fiber material;
2. Equipped with a transparent head support.



Head-Shoulders Baseplate

YC-KIII-118T

1. Carbon fiber material;
2. T-TYPE;
3. Equipped with a transparent head support;
4. Compatible with t-type head-neck-shoulders mask;
5. More suitable for Asian.



Breast Baseplate

YC-KIII-119L

1. Carbon fiber material;
2. The left and right sides of the arm supports can ensure the upper arms abduction or up and down easily;
3. Compatible with breast sheet and belly-pelvis mask.



Breast Baseplate

YC-KIII-119

1. Carbon fiber material;
2. Hand grips at head end;
3. Compatible with breast sheet and breast vacuum fixation mat.



Wing-Shaped Board

YC-KIII-126N

1. Carbon fiber material;
2. Narrow type, width is 545mm;
3. T type hand grip is used for patient's arms-up positioning.



Wing-Shaped Board

YC-KIII-126

1. Carbon fiber material;
2. Wide type, width is 623mm;
3. U type hand grips are used for patient's arms-up positioning.



Head-Shoulders Baseplate

YC-KIII-114

1. Carbon fiber material;
2. Application: choose masks with 3,4or5points to meet the specific needs of the treatment.



Belly-Pelvis Baseplate

YC-KIII-120

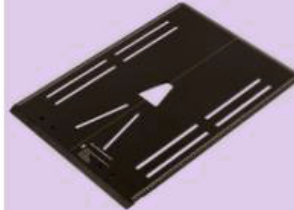
- Carbon fiber material;
Compatible with belly-pelvis mask.



Belly-Pelvis Baseplate

YC-KIII-120T

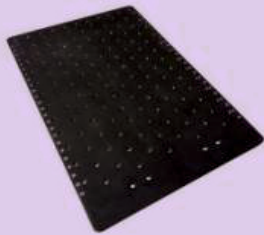
1. Carbon fiber material;
2. T-TYPE;
3. Compatible with breast vacuum fixation mat and t-type belly-pelvis mask.



Belly-Pelvis Baseplate

YC-KIII-122

1. Carbon fiber material;
2. Compatible with 4-point belly-pelvis mask or 6-point pelvis mask.



Limbs Baseplate

YC-KIII-130C

1. Carbon fiber material;
2. Arms and legs can be used only;
3. Patients can be placed any desired position.



Transparent Head Supports

YC-DF110

1. PVC material;
2. 6 various sizes (A-F) per set;
3. Transparent head supports can be purchased individually or in sets of six with six various sizes.



Carbon fiber Head Supports

YC-DF201

- Carbon fiber material.
4 various sizes (A-D) per set.
Used for the AIO-Plate.



Prone Head Supports

YC-DF112

- Polyurethane material;
No attenuation;
Two sizes per set.



High-accuracy Head Supports

YC-DF111

1. 6 various sizes (A-F) per set;
2. High-accuracy head supports are made of low density ployethylene foam;
3. Six different shapes are sold separately or as a complete set;
4. Compatible with head baseplate and head-neck-shoulders baseplate.



Treatment Chair

YC-DF166

1. Carbon fiber material;
2. Hand grips and arm supports with scale on both sides;
3. Head support together with head and belly part belt let patient feels convenient, comfortable and reliable;
4. This product used for the patient who needs to be treated in a seat position.



Wedge Cushions

YC-DF113

1. Polyurethane material;
2. 4 different angles per set: 5°, 10°, 15° and 25°.